



SOUTHEAST CIRCULAR

Publication of Water Environment Association of Texas,
Southeast Texas Section

Featured Event — 69th St. WWTP Tour



In place of a featured speaker, the November Meeting will be a tour of Houston's largest wastewater treatment plant.

The City of Houston's 69th Street Wastewater Treatment Plant is a 200 MGD, two-stage, pure oxygen activated sludge treatment plant. On the same site is a 125 ton/day sludge processing plant which processes sludge into fertilizer for sale to the public. The plant operates through a four-step process:

Preliminary Treatment

Influent enters the plant through a 144-inch diameter trunk sewer, flows through four mechanical bar screens and then through grit removal.

Two-Stage Activated Sludge

The flow proceeds to the two stage activated sludge process where about 96 percent of the BOD is removed. Pure oxygen from a 300 ton/day cryogenic oxygen generation

plant is used in the activated sludge process. The pure oxygen system used in the reactor basins also alleviates odor and air pollution and permits greater loading rates per unit of site area. The plant boasts 16 180-foot clarifiers.

Effluent Filtration

The third step is filtration which separates out finely divided particles not settled out in clarifiers.

Disinfection

Finally flow is chlorinated and dechlorinated prior to discharge into Buffalo Bayou through an outfall structure upstream from the Houston Ship Channel Turning Basin.

Don't miss this rare opportunity for a guided tour of this exceptional facility on November 16th.

Meeting Notice

Inside this issue:

The President's Message	2
Meeting Sponsors	3
2011-2012 Officers	4
Supporters of WEAT	5
Map	6

**Wednesday
November 16**

69th Street WWTP Field Trip

Time: Registration 11:00
Lunch 11:30
Tour 12:00

Place: See map on last page

Luncheon: \$15 for a box lunch

Sponsors: EI²

**Environmental Treatment
Technologies
CDM**

RSVP: Monica Stiggins (281-589-7257)
or monica.stiggins@klotz.com

The President's Message

Dear WEAT Members,

As I mentioned in the last edition of the Southeast Circular, our section officers are trying out different ways to provide a better experience for our local membership. As a result, our November meeting will be a tour of the City of Houston 69th Street Wastewater Treatment Plant. We believe this will be a great hands-on learning experience and serve as a supplement to our regular Section meetings held at HESS that feature great presentations from local industry professionals. I encourage everyone to come out for the tour and bring younger colleagues that may have not have been to many wastewater treatment plants.

On November 2nd, the local joint AWWA/WEAT Water for People committee hosted the 6th Annual "Beer for Us, Water for People" fundraiser benefitting Water For People at St Arnold Brewery. It was a fun and tremendously successful event that helped raise a record-breaking \$5,000+ for Water For People. Thank you to all of our sponsors and all of our members that were able to come out and support this worthy cause.

One item that we were hoping to have complete by now is the enhancement of the section website. We are learning that there is more to developing a website than we had first anticipated, but we are getting close and are very excited by the early drafts. We have been coordinating with

WEAT at the state level to develop a consistent format and style as well as ensuring that it has all the necessary functionality and correct information. We *should* have it ready to launch by the end of this month. A big Thank You to our website chair Cory Henry for all of his hard work. He definitely picked the hardest year to volunteer for that position.

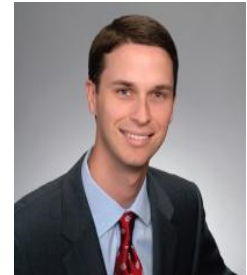
Until our website is complete, it will be unavailable so please RSVP for the tour to Monica Stiggins at (281) 589-7257 or Monica.Stiggins@klotz.com

I want to say a special thanks to EI², CDM and ETT, Inc for sponsoring the November treatment plant tour. Please contact me or Frank Stephens (Frank.Stephens@arcadis-us.com) if you are interested in sponsoring a meeting or placing your company's advertisement in our newsletter.

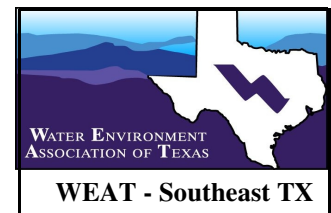
We will inform our membership of the exact dates of the next meetings as soon as possible but below is our schedule for the rest of the season.

I look forward to seeing you all at the field trip next week. For those that can not attend the tour, have a great holiday season.

Richard



Richard Weatherly , P.E.
Section President



Southeast Section Events Calendar

Tour of the Missouri City Surface Water Treatment Plant

January

WEAT/AWWA Joint 1/2 day Seminar (Location TBD)

February/March

Engineering Ethics Meeting at HESS

May

Meeting Sponsors for November

environmental EI² improvements, inc.

“Your avenue to water
and wastewater treatment
solutions.”

Larry Kelm
Lyle Milstead
Bucky Richardson



Today's demanding marketplace requires a full-service manufacturers' representative who has the resources to make your project successful.

Our diverse staff is comprised of both inside and outside sales specialists with education and experience in such disciplines as engineering and construction management all ready to assist you with equipment selection, application, cost estimating and service.

Some companies view good customer service as a lost art but at EI² it's our way of doing business every day.

www.ei2texas.com



Environmental Treatment Technologies, Inc.

Environmental Treatment Technologies, Inc. was formed in March 2003 as a Manufacturer's Representative organization covering the states of Texas and Oklahoma in the Municipal Water and Wastewater Treatment marketplace. Our primary purpose is to provide the most effective coverage for our Principals while providing sound technical data and design assistance to treatment plant Design Engineers and Owners. ETT Sales Agents are graduate engineers with extensive experience in the design and operation of municipal water and wastewater treatment plants. Our sales agents are qualified to be responsive to the individual needs of our customers and to offer innovative process equipment solutions to the challenges faced by today's treatment plant Owners and Engineers. We pride ourselves in our dedication to follow-up and customer service on every project.

13306 Northshore Drive
Montgomery, TX. 77356
phone: (936) 448-6520
Pete Czerwinski, P.E.
Brenda Haws



Camp Dresser & McKee Inc. (CDM) is a full-service consulting, engineering, construction, and operations firm helping public and private clients improve the environment and infrastructure. Founded in 1947, CDM is an employee-owned corporation with a multi-disciplinary staff of over 3,600 worldwide. CDM is headquartered in Cambridge, MA and operates from 79 offices in the U.S. and 39 offices abroad.

CDM offers a wide range of services to meet our clients environmental and infrastructure challenges. Relevant service offerings to ports include:

- Civil engineering and construction management
- Planning and Management
- Environmental compliance and remediation
- Security systems
- Energy management
- Design/Build and Delivery or Construction Management at Risk Services

SOUTHEAST CIRCULAR

Publication of Water Environment Association of Texas, Southeast Texas Section

2011-2012 Officers

President

Richard Weatherly, P.E.

Freese and Nichols, Inc.
Phone: 713-600-6824
raw@freese.com

President-Elect

Lindsay Kovar, P.E.

Brown & Gay Engineers, Inc.
Phone: 281-558-8700
lkovar@browngay.com

Vice-President

Sarah Berkey, P.E.

LAN, Inc.
Phone: 713-821-0408
SMKresta@lan-inc.com

Treasurer

Aubrey Lofton

CDM
Phone: 713-423-7300
LoftonAM@cdm.com

Secretary

Monica Stiggins

Klotz Associates, Inc.
Phone: 281-589-7257
monica.stiggins@klotz.com

Past President

Vinoth Manoharan, P.E.

LJA Engineering, Inc.
Phone: 713-953-5260
vmanoharan@ljaengineering.com

Committee Chairs

Section Representative

Kim Chanslor, P.E.

CDM
Phone: 713-423-7353
ChanslorKM@cdm.com

Awards Committee

Kim Chanslor, P.E.

CDM
Phone: 713-423-7353
ChanslorKM@cdm.com

Water for People & Young Professionals Committees

Benji Addo, P.E.

Pate Engineers, Inc.
Phone: 832-590-7132
BAddo@PateEng.Com

Scholarship Committee

Lindsay Kovar, P.E.

Brown & Gay Engineers, Inc.
Phone: 281-558-8700
lkovar@browngay.com

Public Education Committee

Tian Wang, P.E.

CDM
Phone: 713-423-7300
wangt@cdm.com

Website Committee

Cory Henry

Brown & Gay Engineers, Inc.
Phone: 281-558-8700
chenry@browngay.com

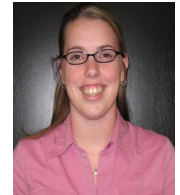
Sponsorship Committee

Frank Stephens, P.E.

Arcadis
Phone: 713-953-4800
Frank.stephens@arcadis-us.com



Richard



Lindsay



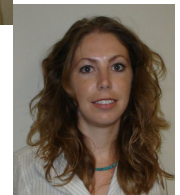
Sarah



Aubrey



Monica



Kim



Vinoth

SOUTHEAST CIRCULAR

Publication of Water Environment Association of Texas, Southeast Texas Section

Supporter's of WEAT – Section 9




HARTWELL ENVIRONMENTAL CORPORATION

Houston
Austin
Dallas
Tulsa

Water and Wastewater Treatment Equipment

Tomball, TX 281.351.8501	Austin, TX 512.347.7676
Arlington, TX 817.446.9500	Tulsa, OK 918.299.8555

www.hartwellenv.com



Vision Equipment


Bill Loyd

Environmental Process Technologies

Office: 281-376-9828
Fax: 281-376-9151
Fax: 210-568-2233
Mobile: 281-467-2461

17907 Moss Point Drive
Spring, Texas 77379

Email: bill@visionequipment.net



Gaylord Investment Company

Joe Schmid
Charlie Milstead
Carl R. Baker

Water and Wastewater Leased Equipment

P.O. Box 79266 Houston, TX 77279 e-mail: carl@gaylordhou.com	Phone: 713/461-1111 Fax: 713/461-1821 Cell: 832/259-2567
--	--



ett

ENVIRONMENTAL TREATMENT TECHNOLOGIES, INC.

Austin • Houston

Brenda Haws

13306 Northshore Drive Montgomery, Texas 77356 brenda.haws@ett-inc.com	Bus (936) 448-6520 Fax (936) 448-6523 Mobile (832) 922-1120
--	---

To advertise with us, Contact Frank Stephens @ (713) 953-4800 or frank.stephens@arcadis-us.com

SOUTHEAST CIRCULAR

Publication of Water Environment Association of Texas, Southeast Texas Section

DIRECTIONS TO 69TH STREET WWTP Parking:

1790 Gazin Street, Houston, Texas

FROM I-10: Exit Wayside heading south, exit on Clinton, turn right, turn left on 69th Street, turn right on Gazin Street and turn right into the parking lot.

